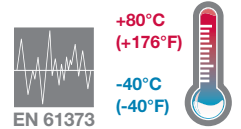


- > Port size: 3/4" ... 1 1/2" (ISO G/PTF)
- > Non-rising adjusting knob has snap-action lock
- > Diaphragm and balanced valve design ensure good regulation characteristics
- > Wide temperature range
- > Shock and vibration tested to EN 61373, Category 1, class A and B



Technical features

Medium:
Compressed air only

Maximum operating pressure:
20 bar (290 psi)

Pressure range:
(standard)
0,4 ... 8 bar (5.8 ... 116 psi)
Other pressure ranges are available contact Norgren

Port sizes:
3/4", 1", 1 1/4" or 1 1/2"

Gauge port:
1/8 PTF with PTF main ports
Rc1/8 with ISO G main ports

Flow:
See table below

Relieving:
With

Ambient/Media temperature:
-40° ... +80°C (-40° ... +176°F)
Version with gauge:
-40° ... +65°C (-4° ... +149°F)
Air supply must be dry enough to avoid ice formation at temperatures below +2°C (+35°F).

Materials:
Body, yoke and bonnet: Aluminium
Adjusting knob: Acetal resin
Elastomers: Synthetic rubber

Technical data - standard models

| Symbol | Port size | Size | Flow* | | Weight | | Model | |
|--------|--------------|-------|-------|------|--------|-------|---------------|---------------|
| | | | dm³/s | scfm | (kg) | (lbs) | ISO G thread | PTF thread |
| | 3/4" | — | 150 | 318 | 1,95 | 4.29 | LR68G-6GK-RLN | LR68G-6AK-RLN |
| | 1" | Basic | 180 | 381 | 1,89 | 4.16 | LR68G-8GK-RLN | LR68G-8AK-RLN |
| | 1 1/4" | — | 180 | 381 | 1,93 | 4.25 | LR68G-AGK-RLN | LR68G-AAK-RLN |
| | 1 1/2" | — | 180 | 381 | 1,97 | 4.34 | LR68G-BGK-RLN | LR68G-BAK-RLN |
| | Without yoke | — | | | | | LR68G-NNK-RLN | LR68G-NAK-RLN |

* Typical flow with 10 bar (145 psi) inlet pressure, and 6,3 bar (91 psi) set pressure and 1 bar (14.5 psi) drop from set.

Option selector

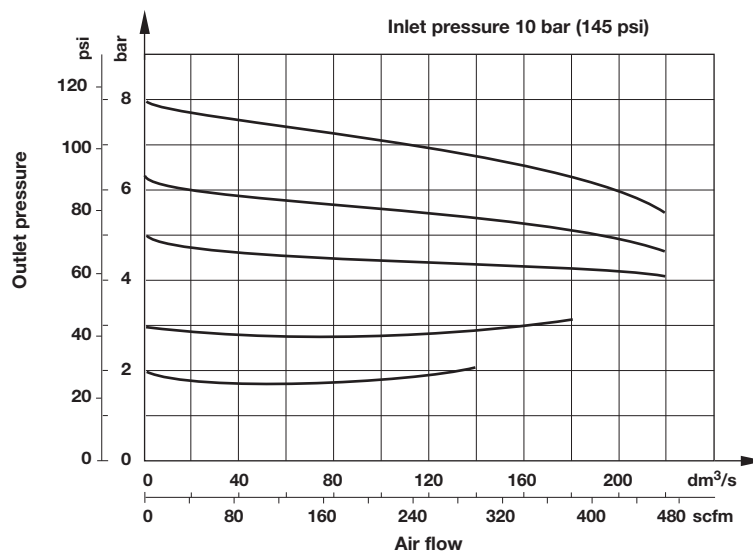
LR68G-★★K-RLN

| Port size | Substitute |
|--------------|------------|
| 3/4" | 6 |
| 1" | 8 |
| 1 1/4" | A |
| 1 1/2" | B |
| Without yoke | N |

| Thread | Substitute |
|---|------------|
| PTF or without yoke (N in 6th position), drain thread = PTF | A |
| ISO G parallel (standard) | G |
| Without yoke (N in 6th position), drain thread = ISO Rc | N |

Flow characteristics



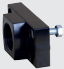


Port size 1"
Range 0,4 ... 8 bar



Accessories, service kit and gauges




Accessories

| | Single yoke | Double yoke | End connector kit | Single yoke non threads | Bracket mounting |
|-----------|--|--|--|---|--|
| |  |  |  |  |  |
| Thread | 5 | 5 | 2 | 5 | 1 |
| G3/4 | Y68A-6GN-N1N | Y68A-6GN-N2N | 5524-55 | 74785-98 | 18-001-979 |
| G1 | Y68A-8GN-N1N | Y68A-8GN-N2N | 5524-52 | | 18-001-979 |
| G1 1/4 | Y68A-AGN-N1N | Y68A-AGN-N2N | 5523-52 | | 18-001-978 |
| G1 1/2 | Y68A-BGN-N1N | Y68A-BGN-N2N | 5523-93 | | 18-001-972 |
| 3/4 PTF | Y68A-6AN-N1N | Y68A-6AN-N2N | 5524-53 | | 18-001-979 |
| 1 PTF | Y68A-8AN-N1N | Y68A-8AN-N2N | 5524-50 | | 18-001-979 |
| 1 1/4 PTF | Y68A-AAN-N1N | Y68A-AAN-N2N | 5523-50 | | 18-001-978 |
| 1 1/2 PTF | Y68A-BAN-N1N | Y68A-BAN-N2N | 5523-95 | | 18-001-972 |

| | |
|---|--|
| <p>Nut</p>  <p>4</p> <p>5520-89</p> | <p>Tamper resistant cap & seal wire</p>  <p>3</p> <p>4355-51</p> |
|---|--|


Service kit



R68G-KITR

Gauges

Center back connection, white face (full technical specification see datasheet 8.900.900)




6

| Pressure range bar *1 | MPa | psi | Ø | Thread size | Model |
|-----------------------|---------|-----------|-------|-------------|------------|
| 0 ... 10 | 0 ... 1 | 0 ... 145 | 50 mm | R1/8 | 18-015-013 |

*1) primary scale

Center back connection, black face for North America (full technical specification see datasheet 8.900.900)

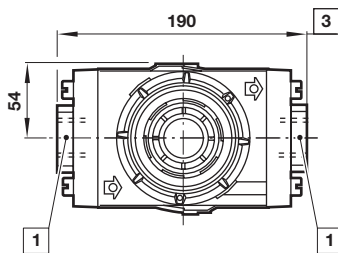
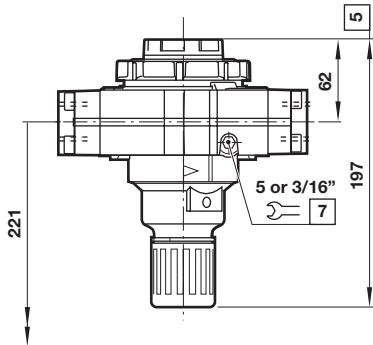


6

| Pressure range psig *1 | bar | MPa | Ø | Thread size | Model |
|------------------------|----------|-----------|--------------|-------------|------------|
| 0 ... 160 | 0 ... 11 | 0 ... 1.1 | 1.5" (40 mm) | 1/8 NPT | 18-015-212 |

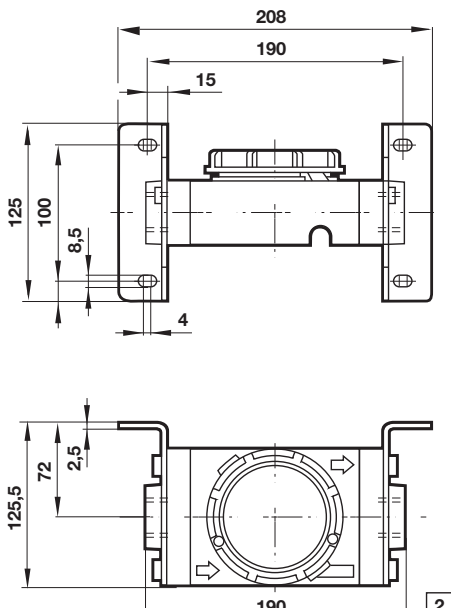
*1) primary scale

Dimensions

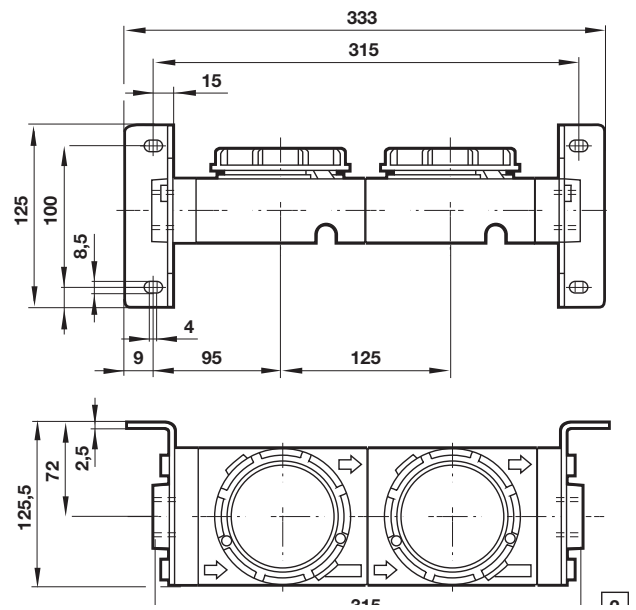
 Dimensions in mm
 Projection/First angle


Minimum clearance required to remove unit from yoke

- 1 Main ports 3/4", 1", 1 1/4" or 1 1/2"
- 3 Plus 10 mm for ports 1 1/4" or 1 1/2"
- 5 Reduces by 4 mm with knob in locked position
- 7 Gauge port 1/8"

Single yoke with bracket


1 For 1 1/4" and 1 1/2" ported yokes add 10 mm

Double yoke with bracket


1 For 1 1/4" and 1 1/2" ported yokes add 10 mm

Warning

These products are intended for use in industrial compressed air and rail transport systems only. Do not use these products where pressures and temperatures can exceed those listed under

»Technical features/data«.

Before using these products with fluids other than those specified, for non-industrial applications, life-support systems or other applications not within published specifications, consult IMI NORGREN.

Through misuse, age, or malfunction, components used in fluid power systems can fail in various modes.

The system designer is warned to consider the failure modes of all component parts used in fluid power systems and to provide adequate safeguards to prevent personal injury or damage to equipment in the event of such failure.

System designers must provide a warning to end users in the system instructional manual if protection against a failure mode cannot be adequately provided.

System designers and end users are cautioned to review specific warnings found in instruction sheets packed and shipped with these products.